

## Attention!

If you use an antivirus program Avast, before installing Pattern Graphix, you must upgrade it to the latest version.

## Pattern Graphix

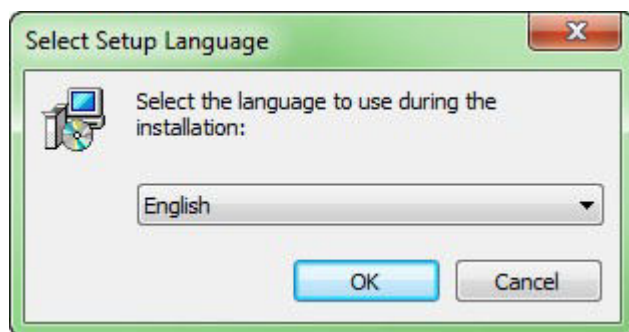
**Pattern Graphix** is a program complex that provides the automatic detection of the technical analysis patterns in MetaTrader 4.

The search of the technical analysis patterns is carried out in real time. When they are detected, the following processes are carried out: displaying in the chart window, the output of a pop-up message – a so-called 'alert' (additional settings required), e-mail messaging and also PUSH-notifications for smartphones running OS Android and iOS.

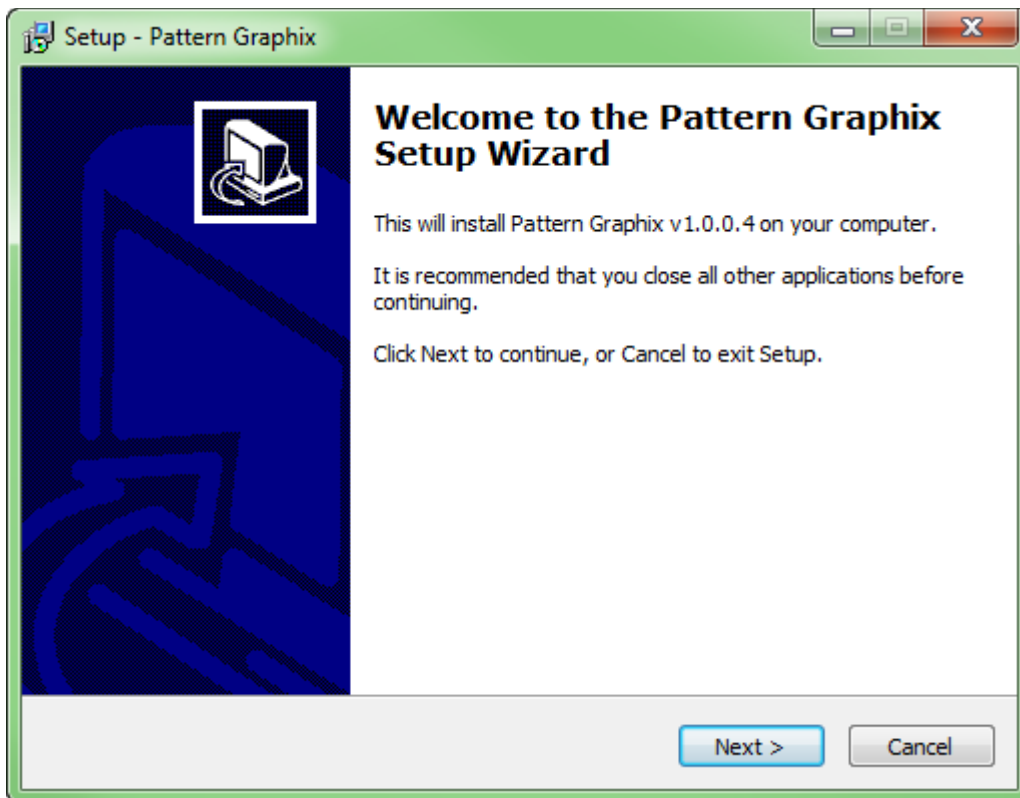
## Install and run

To install Pattern Graphix you should:

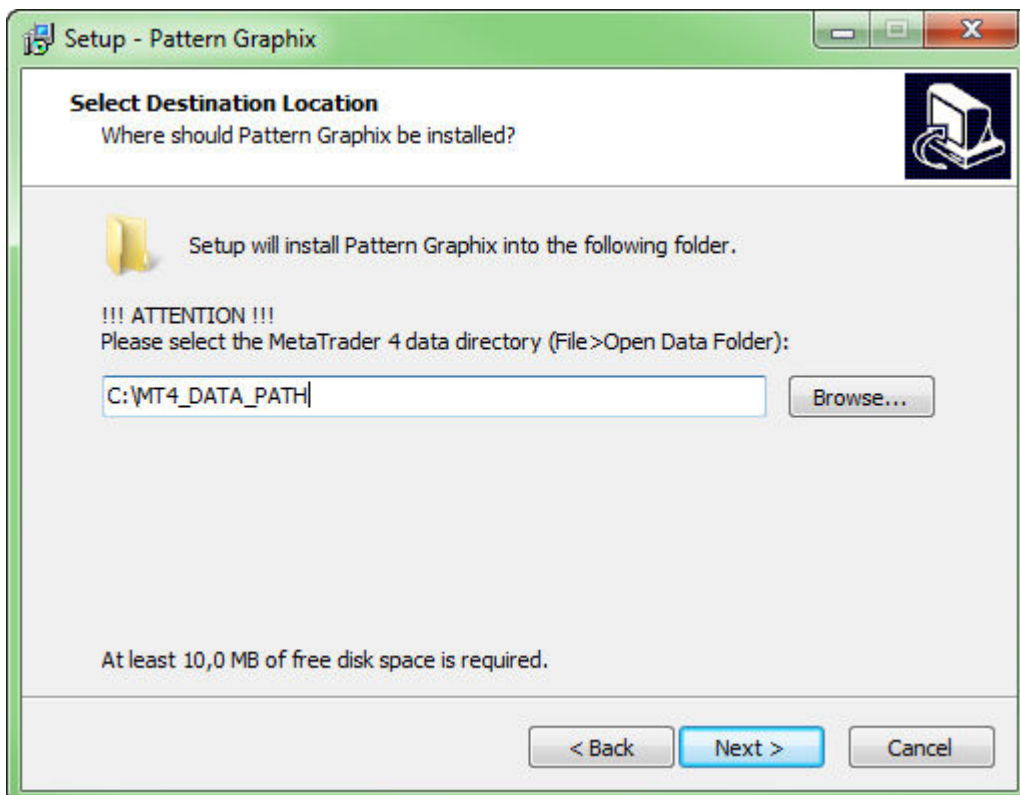
**1) Run the Pattern Graphix executable file and click “Yes”, chose the installation language and click “OK”.**



**2) Click “Next”**

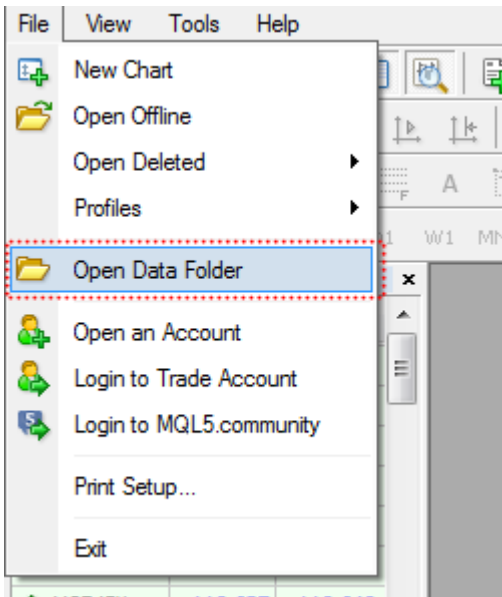


**3) Select the data catalog of MetaTrader 4 and click “Next”.**

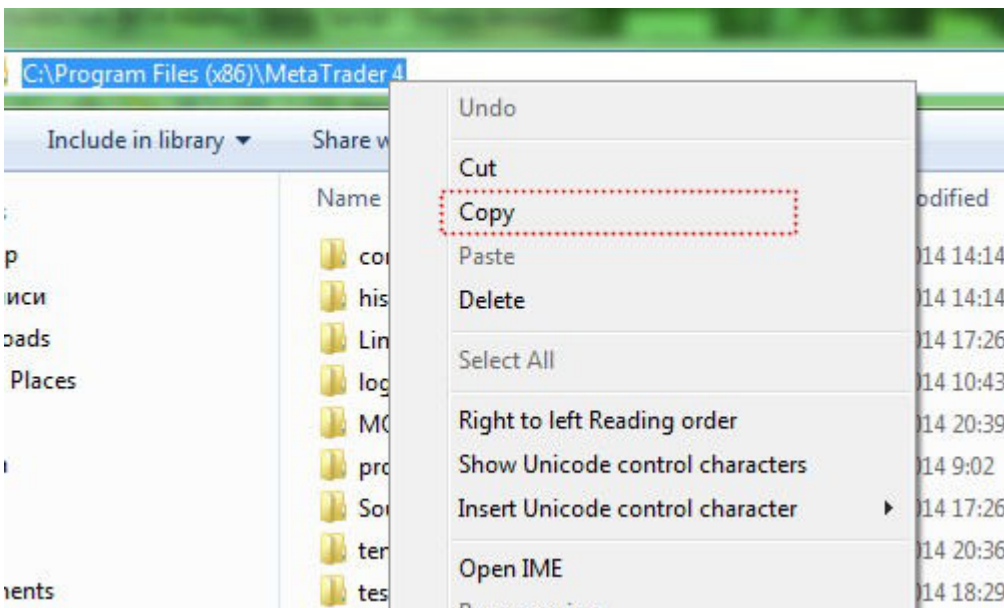


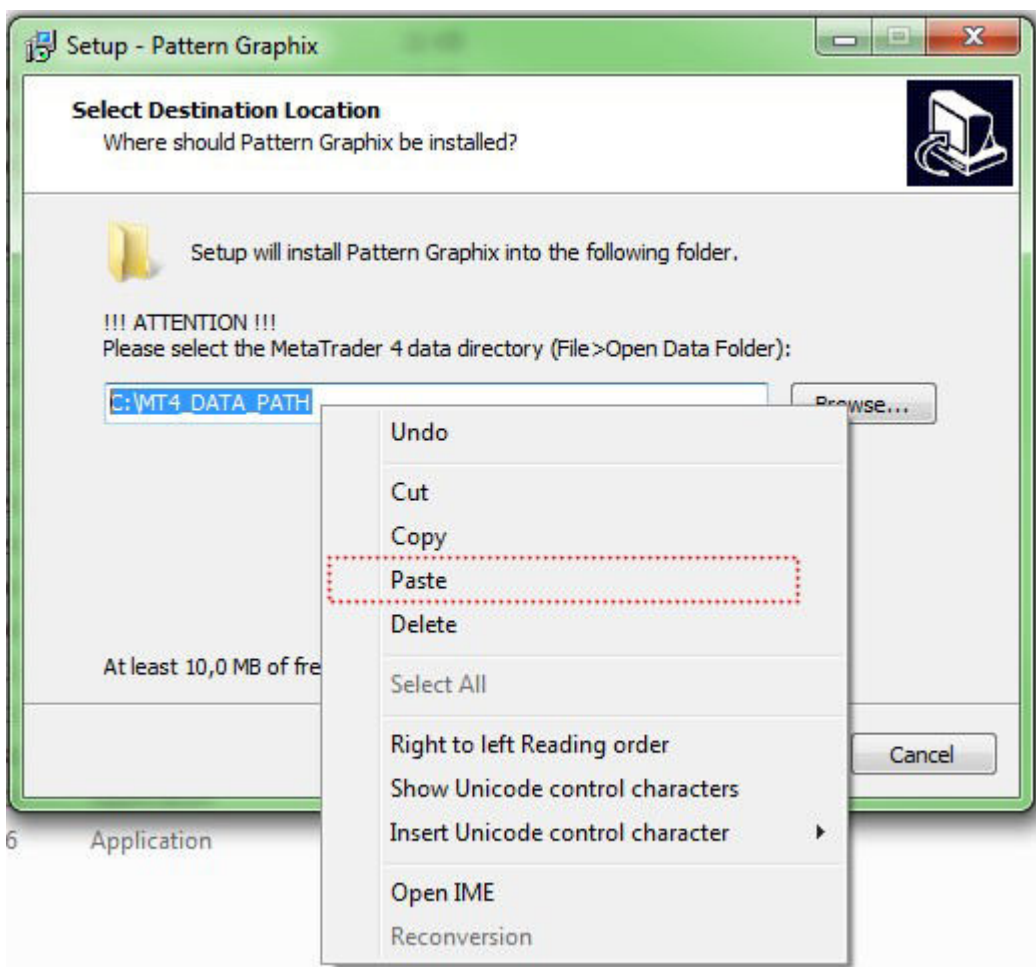
If you want to know the platform's data catalog, run MetaTrader 4 platform and

choose Open data catalog in File menu:

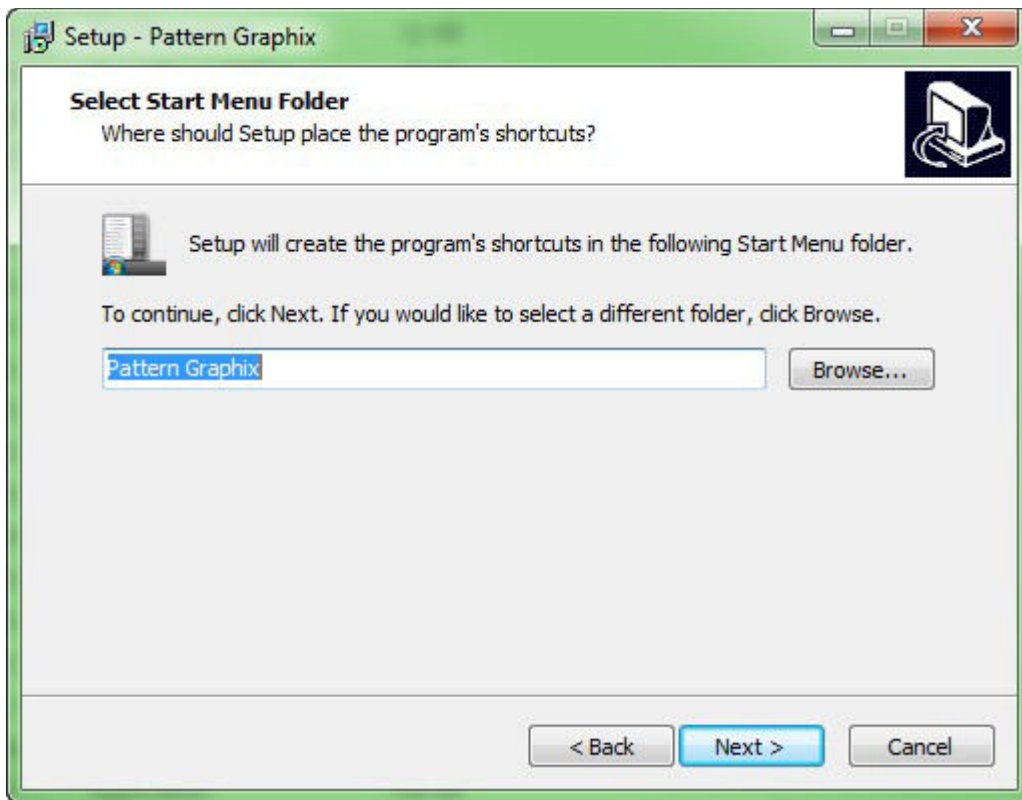


After it the data catalog of MetaTrader 4 will be opened; its path should be stated in the Pattern Graphix executive file:

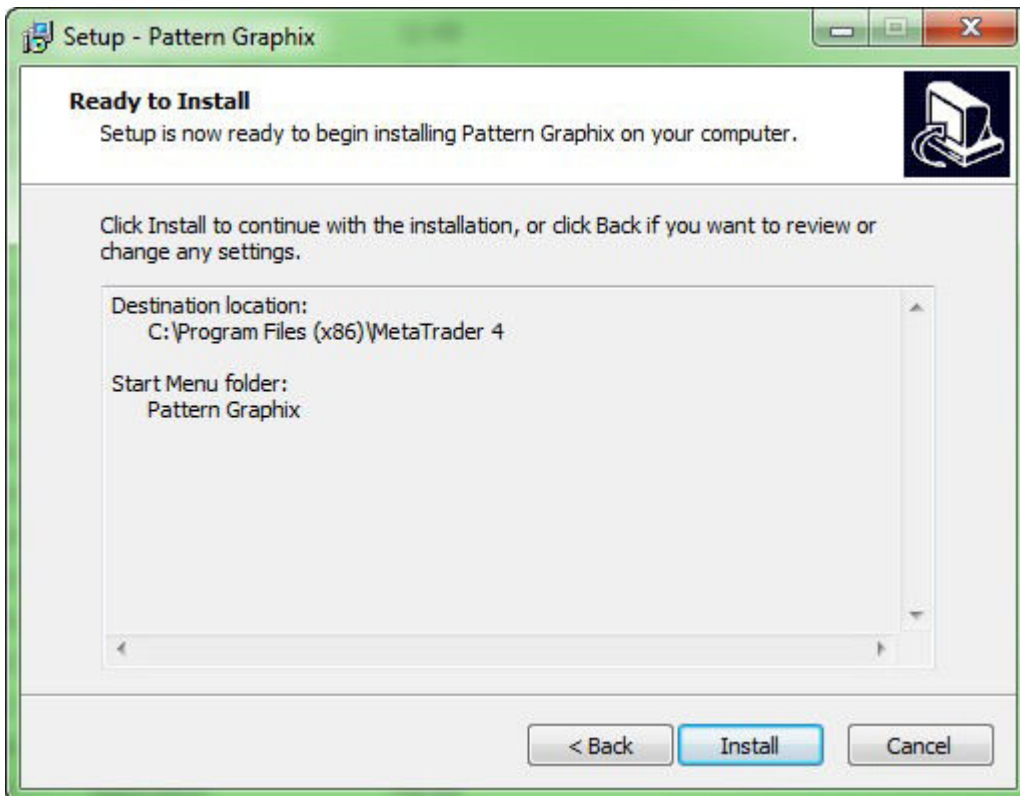




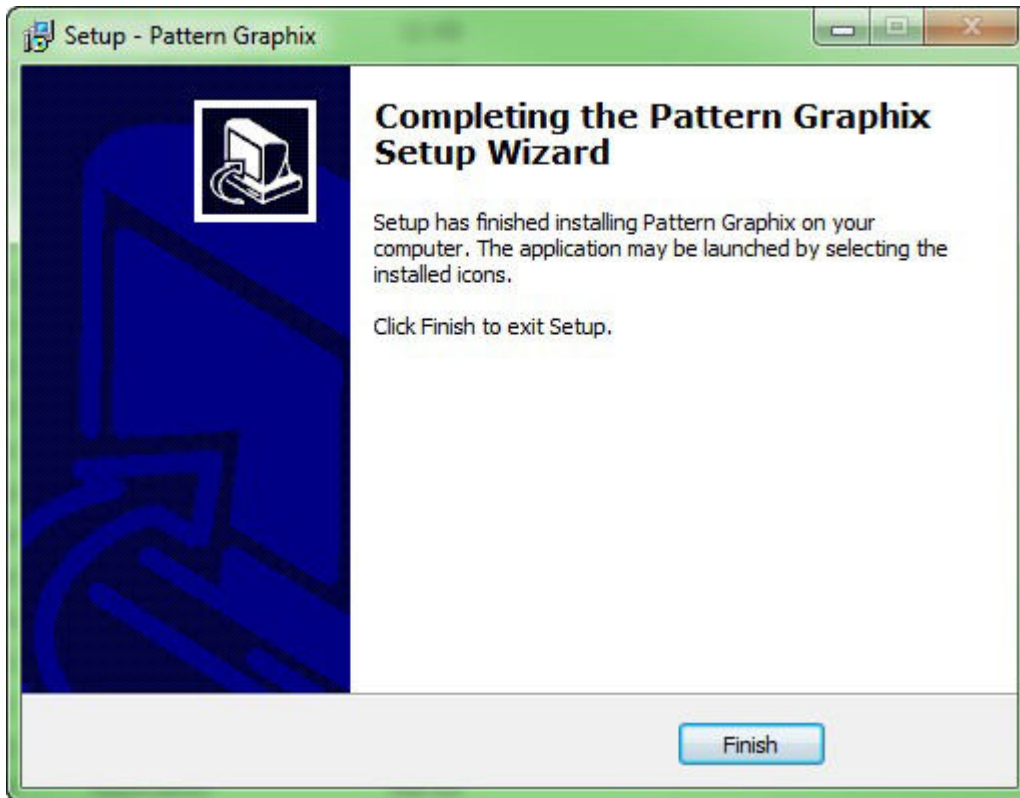
**4) Select a folder in Start menu (the default parameter is recommended) and click “Next”.**



**5) Click "Install".**



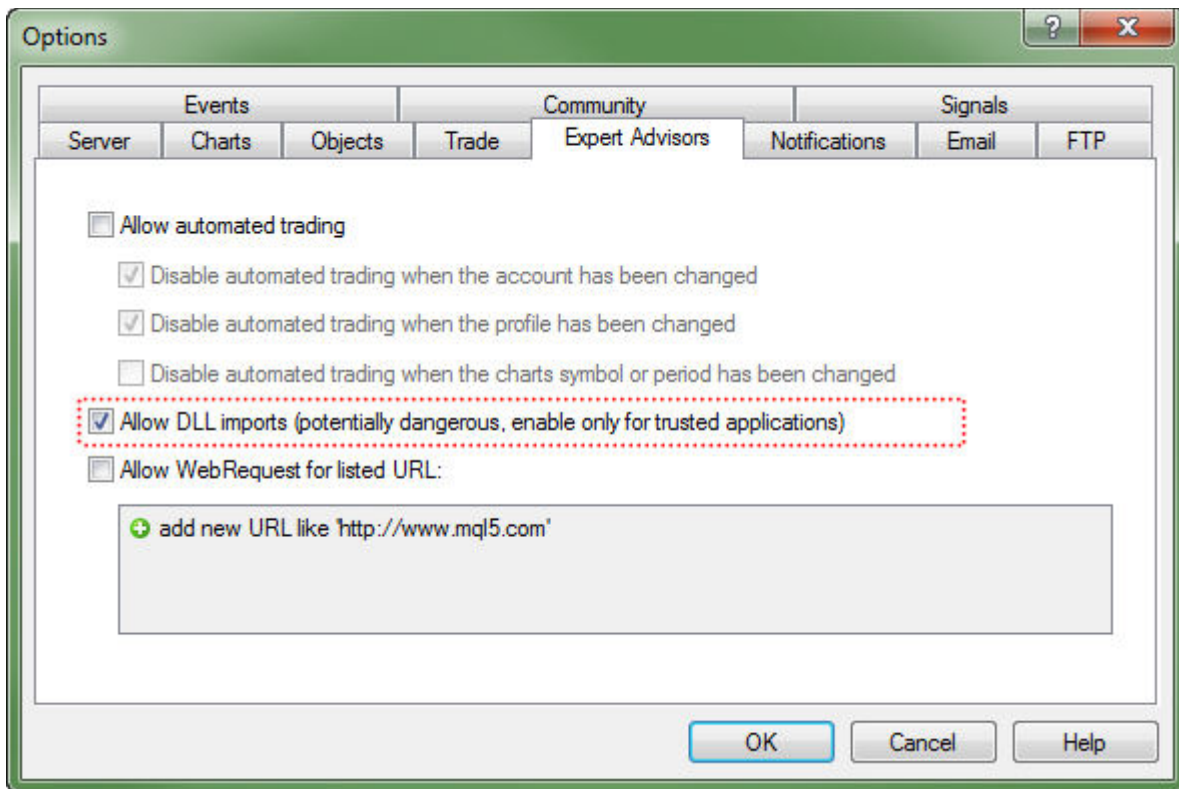
## 6) Click “Finish”



The installation of the Pattern Graphix will be completed.

### **MetaTrader 4 settings**

After the installation of Pattern Graphix, you should run MetaTrader 4 (or rerun, if it was already opened during installation) and set the following parameters (Tools → Options → Expert Advisors):



Allow DLL imports - the tick should be put in the box

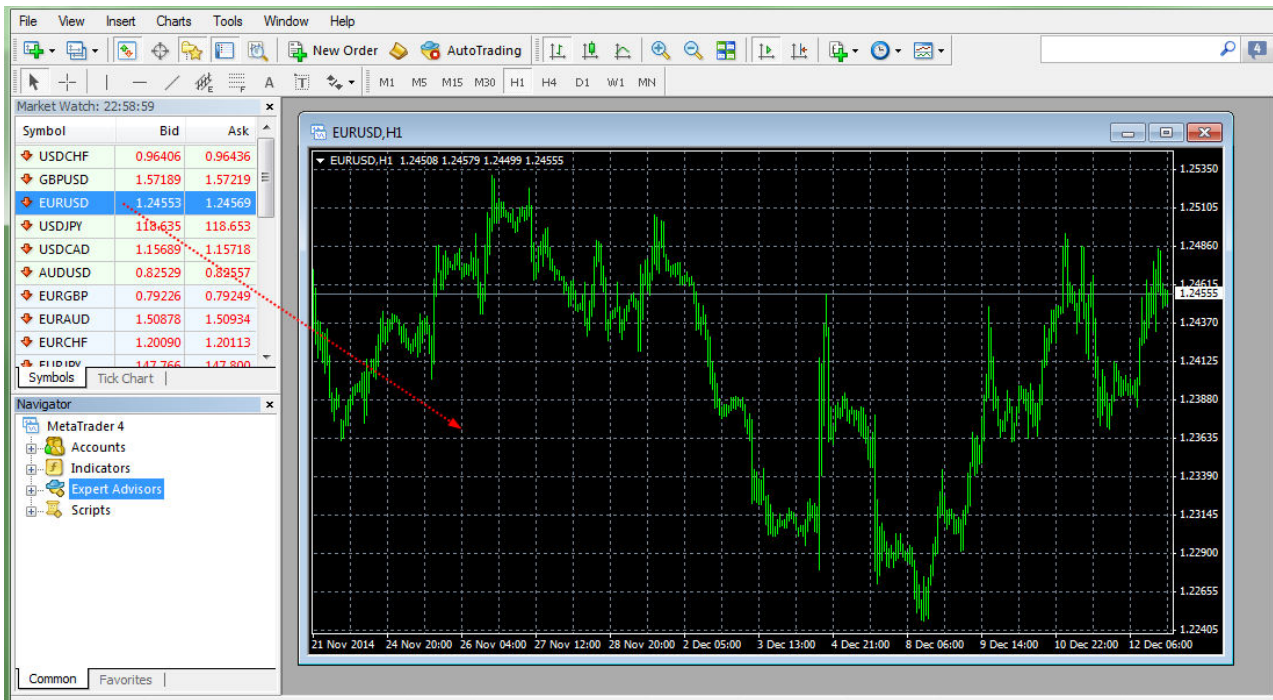
To allow automatic trade is not necessary because Pattern Graphix does not carry out trading operations.

To allow WebRequest access to some URL is also not necessary because the program does not use this technology.

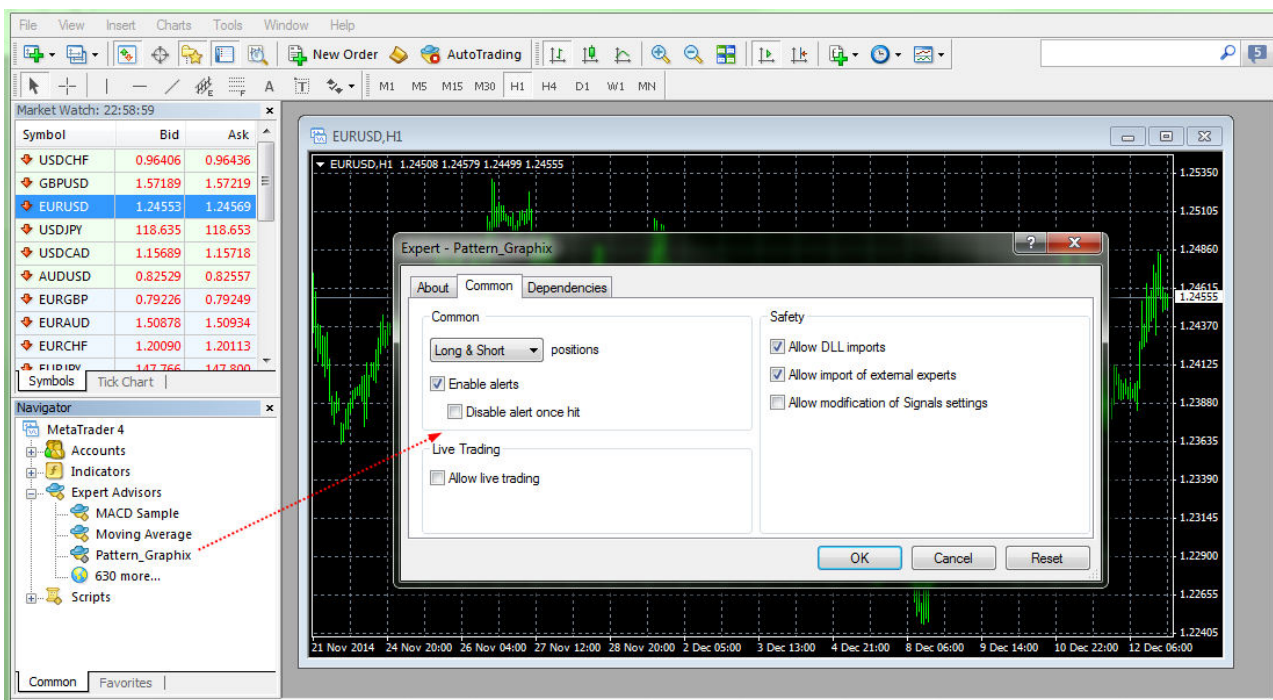
### Pattern Graphix run

To run Pattern Graphix you should:

**1) Open the chart of the needed trading instrument.**

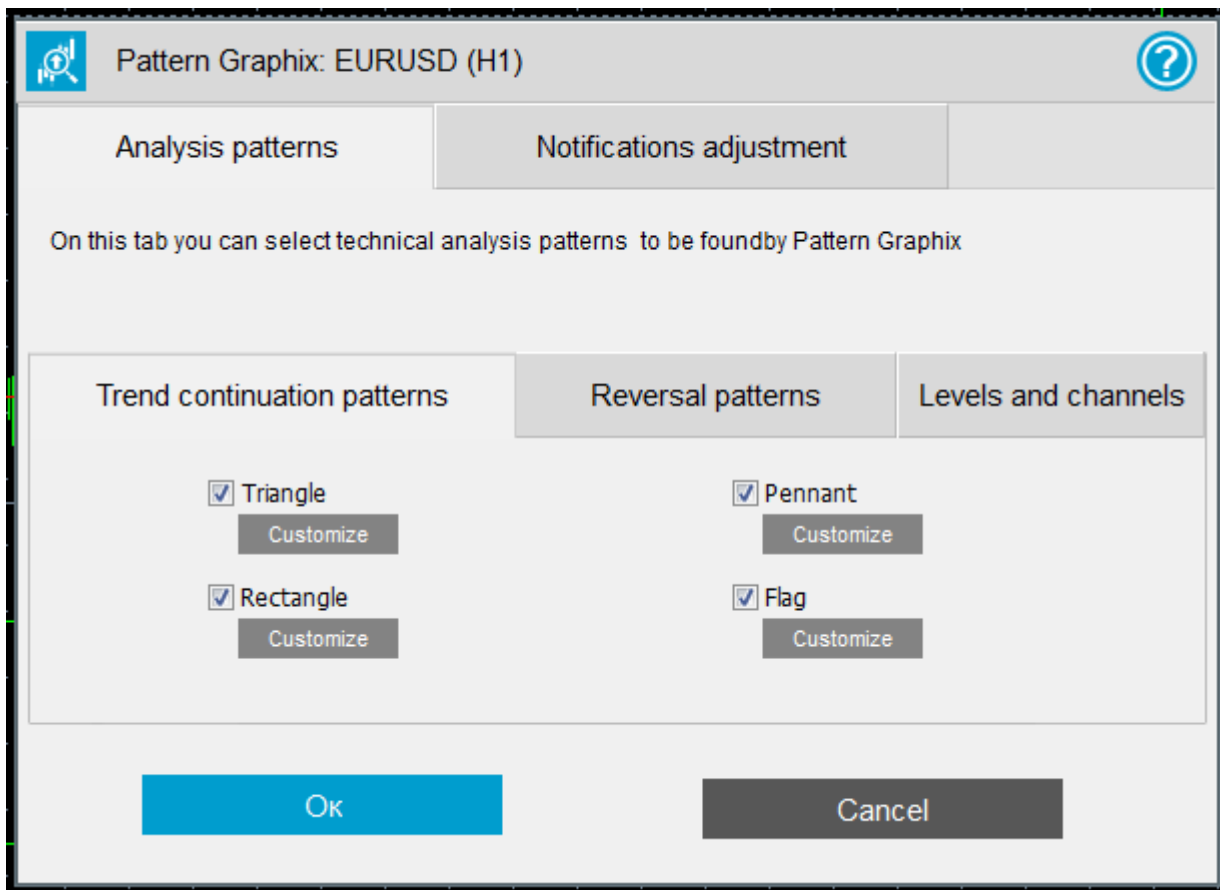


2) In Navigator → Expert Advisors find the Pattern Graphix advisor and drag it to the chart window; in the opened window click “Ok”.



After that, Pattern Graphix will run and settings' window will open:

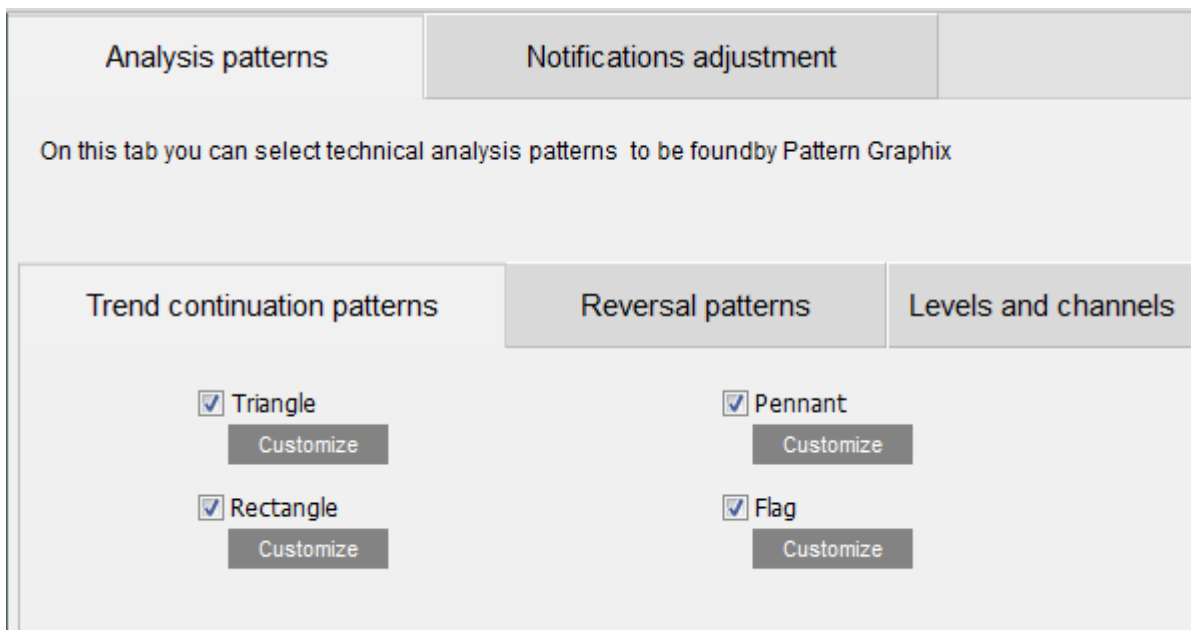




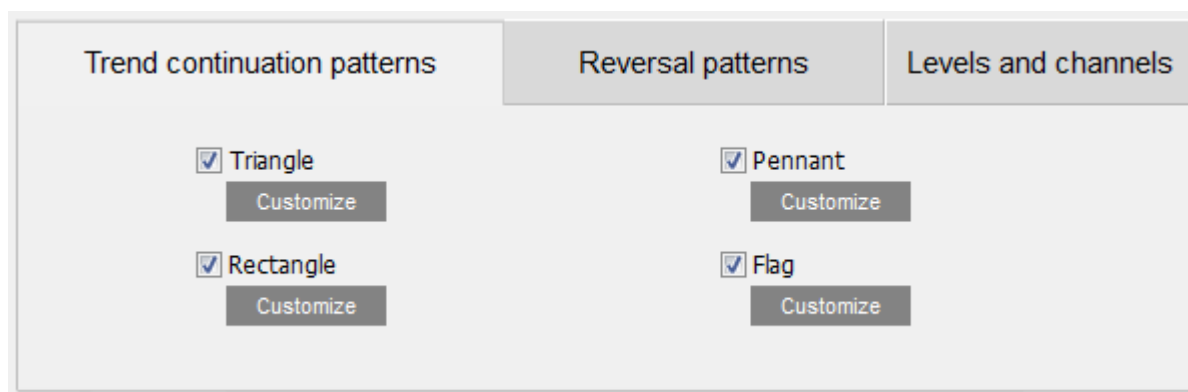
## Pattern Graphix Settings

The Pattern Graphix settings' window consists of two main elements:

### 1) Analysis patterns tab



### 1.1 Trend continuation patterns subtab



There are the following trend continuation patterns:

**Triangle;**

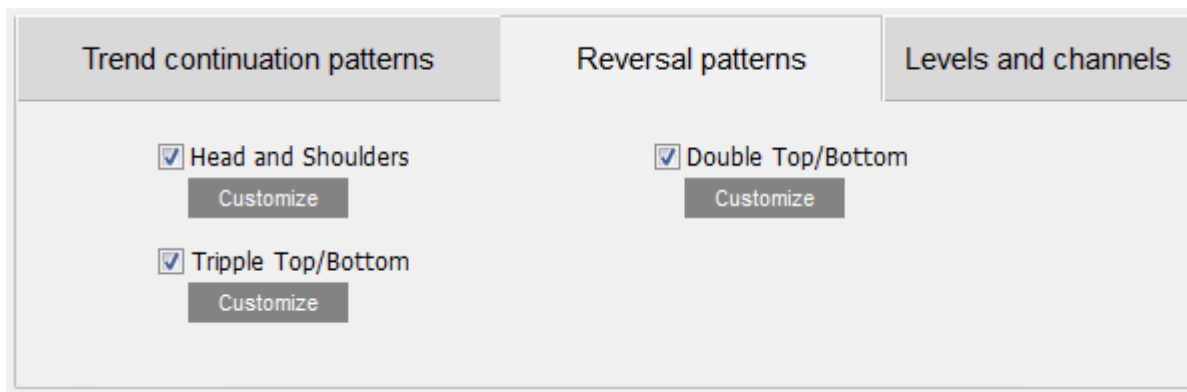
**Rectangle;**

**Pennant;**

**Flag.**

For each pattern, display color calibration is available. You can open it by clicking “Customize”.

### 1.2 Reversal patterns subtab



There are such reversal patterns as:

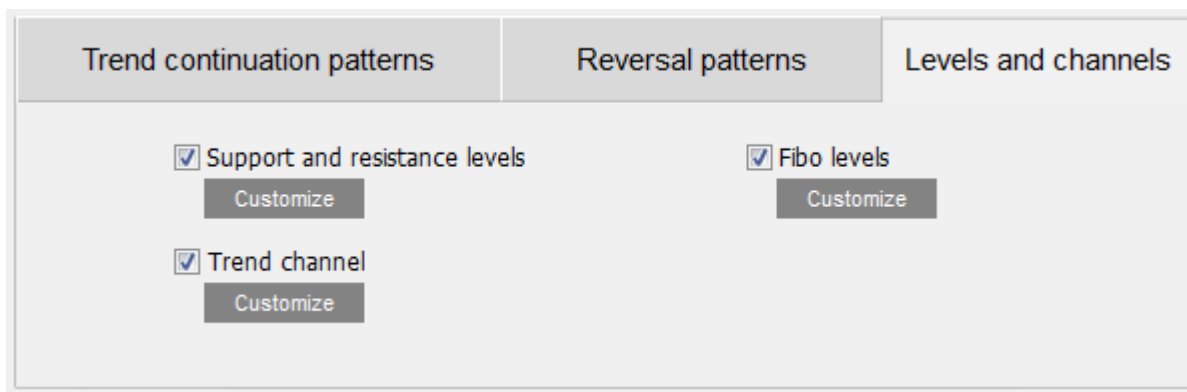
**Head and shoulders;**

**Triple top and triple bottom;**

**Double top and double bottom.**

For each pattern, display color calibration is available. You can open it by clicking “Customize”.

### 1.3 Levels and channels subtab



Here are such lines and levels as:

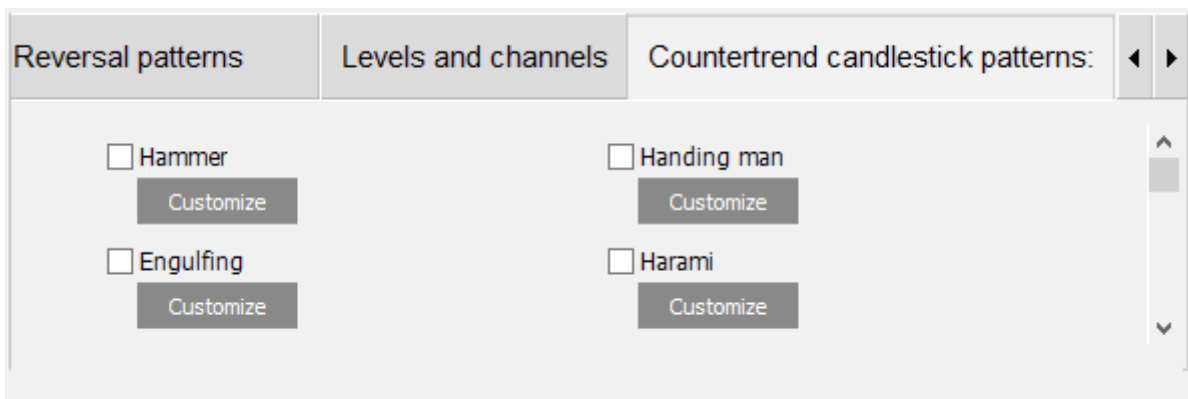
**Support and resistance levels;**

**Trend channel;**

**Fibo levels.**

For each group, display color calibration is available. You can open it by clicking “Customize”.

## 1.4 Countertrend candlestick patterns subtab



There are such candlestick patterns as:

**Hammer;**

**Handing man;**

**Engulfing;**

**Harami;**

**Harami cross;**

**Piercing line;**

**Dark cloud cover;**

**Doji star;**

**Morning and evening star;**

**Morning and evening doji star;**

**Homing pigeon;**

**Three stars;**

**Meeting lines;**

**Bet hold;**

**Three white soldiers;**

**Advance block;**

**Deliberation;**

**Three black crows;**

**Identical three crows;**

**Breakaway;**

**Three inside up and down;**

**Three outside up and down;**

**Three stars in the south;**

**Concealing baby swallow;**

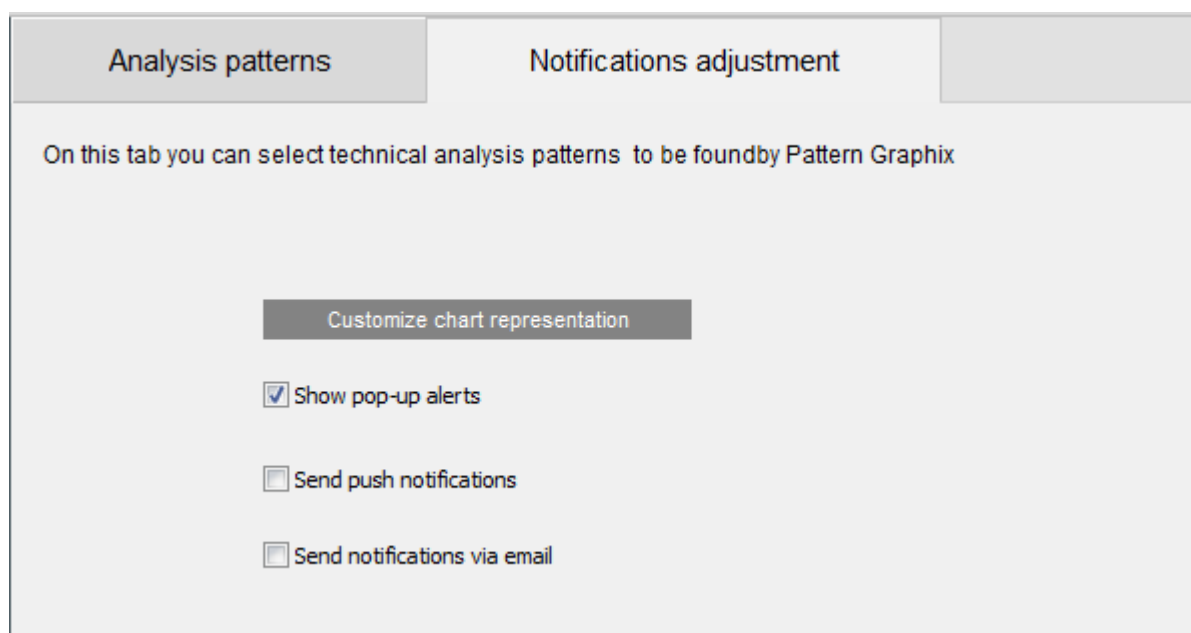
**Stick sandwich;**

**Ladder bottom;**

**Mathcing low.**

For each pattern, display color calibration is available. You can open it by clicking “Customize”.

## **2) Tab “Notifications adjustment”**



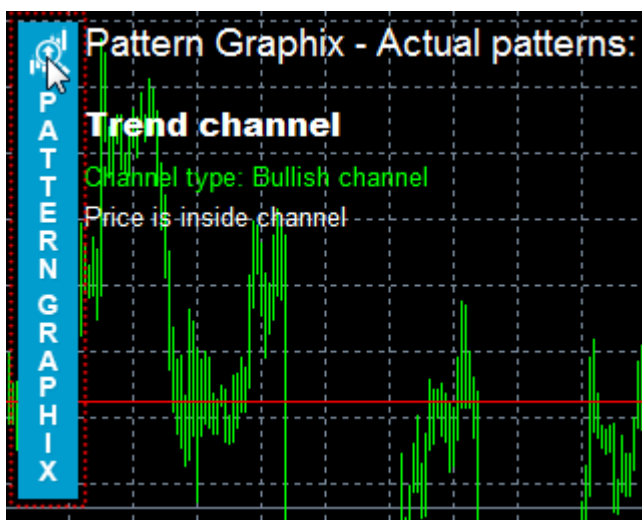
Here you can select used notifications. In the current version, the notifications are available only for trend continuation patterns and reversal patterns.

## Opening of the settings window

At the first run of Pattern Graphix, the settings window will be opened. Later the settings window can be opened by clicking the corresponding button on the chart window:

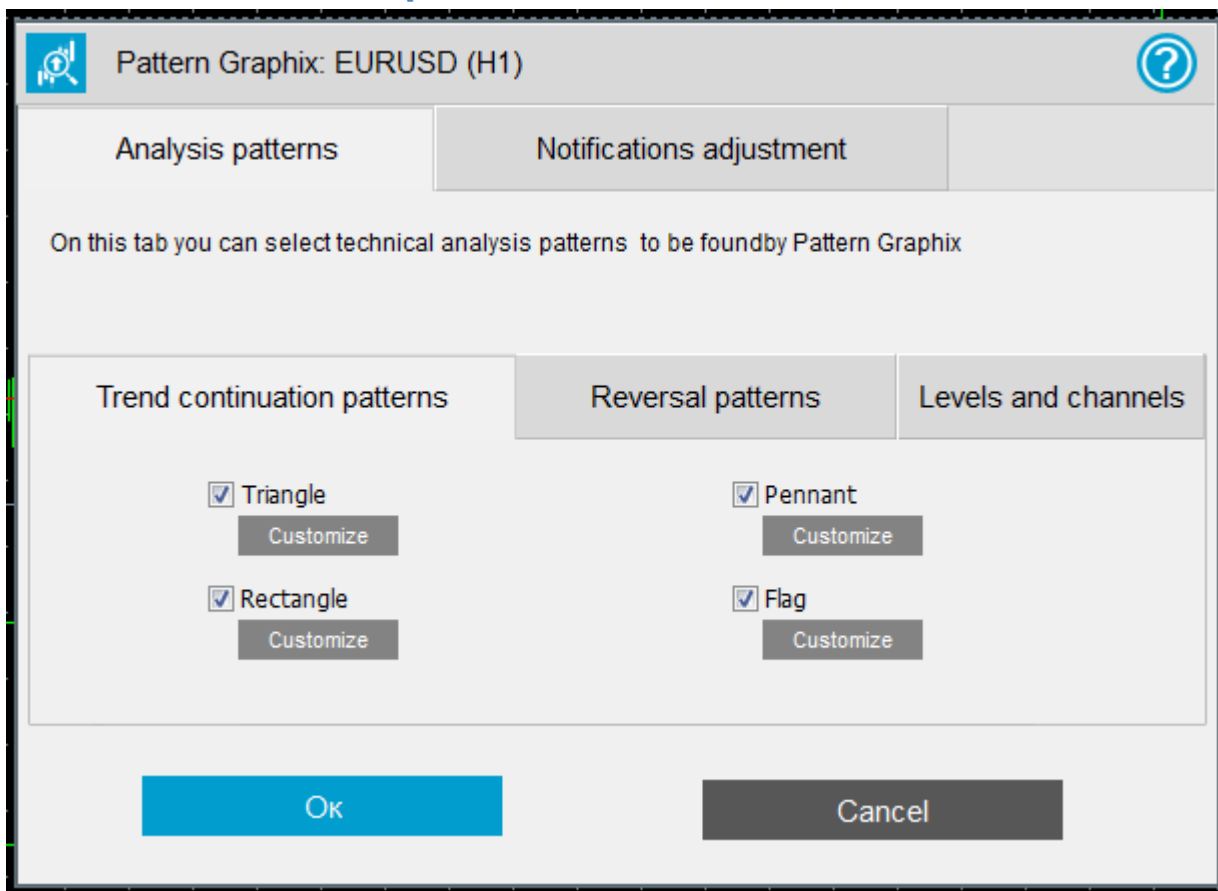


The button is opened downward when hovering it:



## Analysis patterns

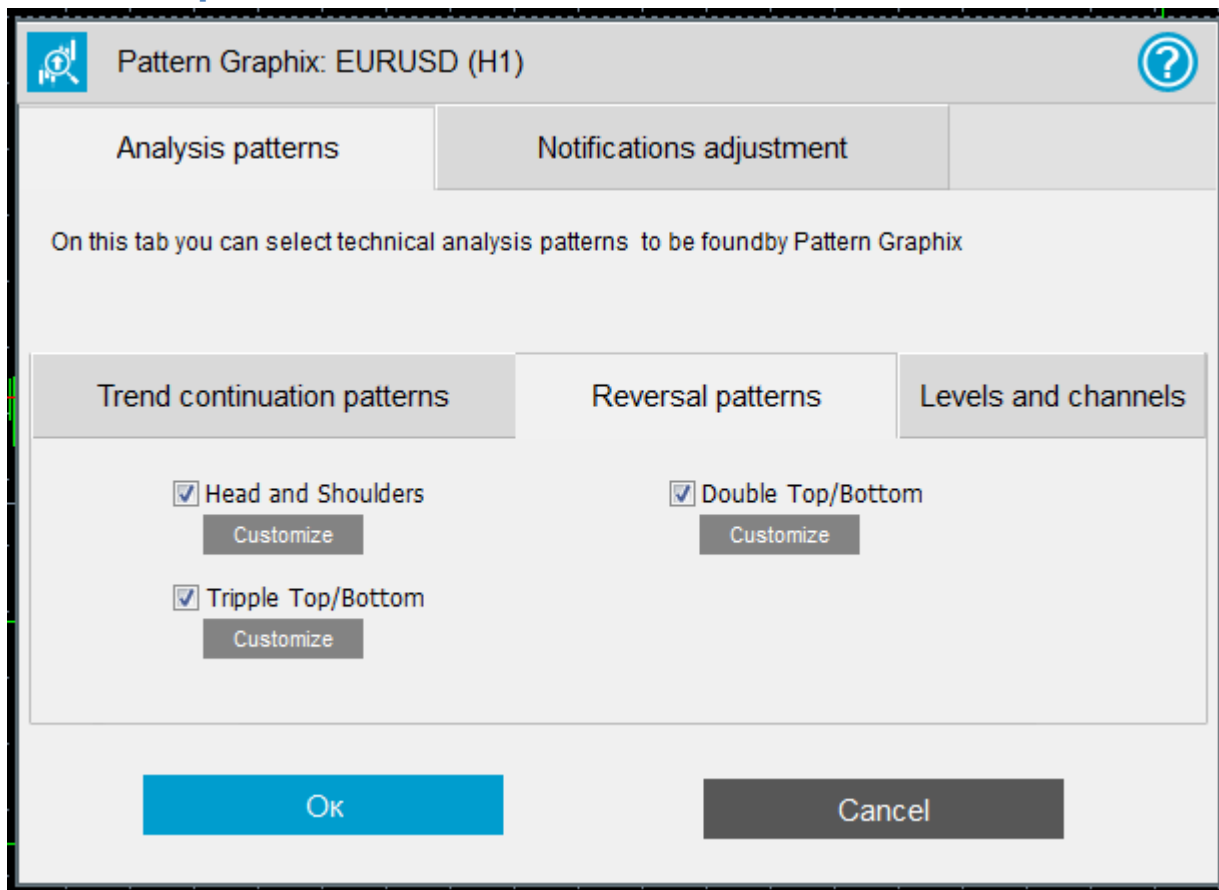
### Trend continuation patterns



The subtab Trend continuation patterns of tab Analysis patterns consists of the following elements:

- 1) **Triangle** defines whether the search of Triangle pattern of technical analysis will be carried out.
- 2) **Rectangle** defines whether the search of Rectangle pattern of technical analysis will be carried out.
- 3) **Pennant** defines whether the search of Pennant pattern of technical analysis will be carried out.
- 4) **Flag** defines whether the search of Flag pattern of technical analysis will be carried out.
- 5) The button **Customize** opens the color calibration window.

## Reversal patterns

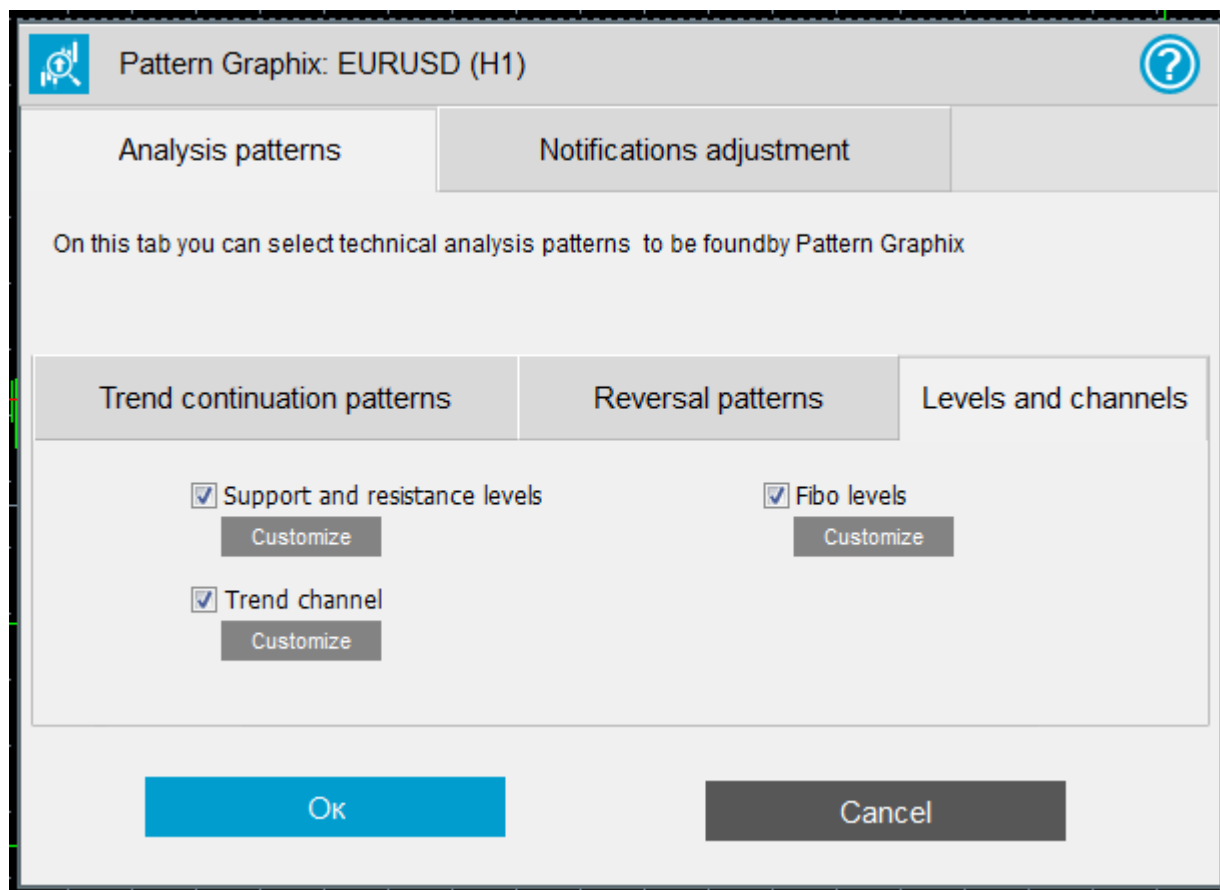


Reversal patterns subtab of the Analysis patterns tab consists of the following elements:

- 1) Head and shoulders pattern** defines whether the search of Head and shoulders pattern of technical analysis will be carried out.
- 2) Triple top and triple bottom** defines whether the search of Triple top and triple bottom pattern of technical analysis will be carried out.
- 3) Double top and double bottom** defines whether the search of Double top and double bottom pattern of technical analysis will be carried out.
- 4) The Customize button** opens the color calibration window.



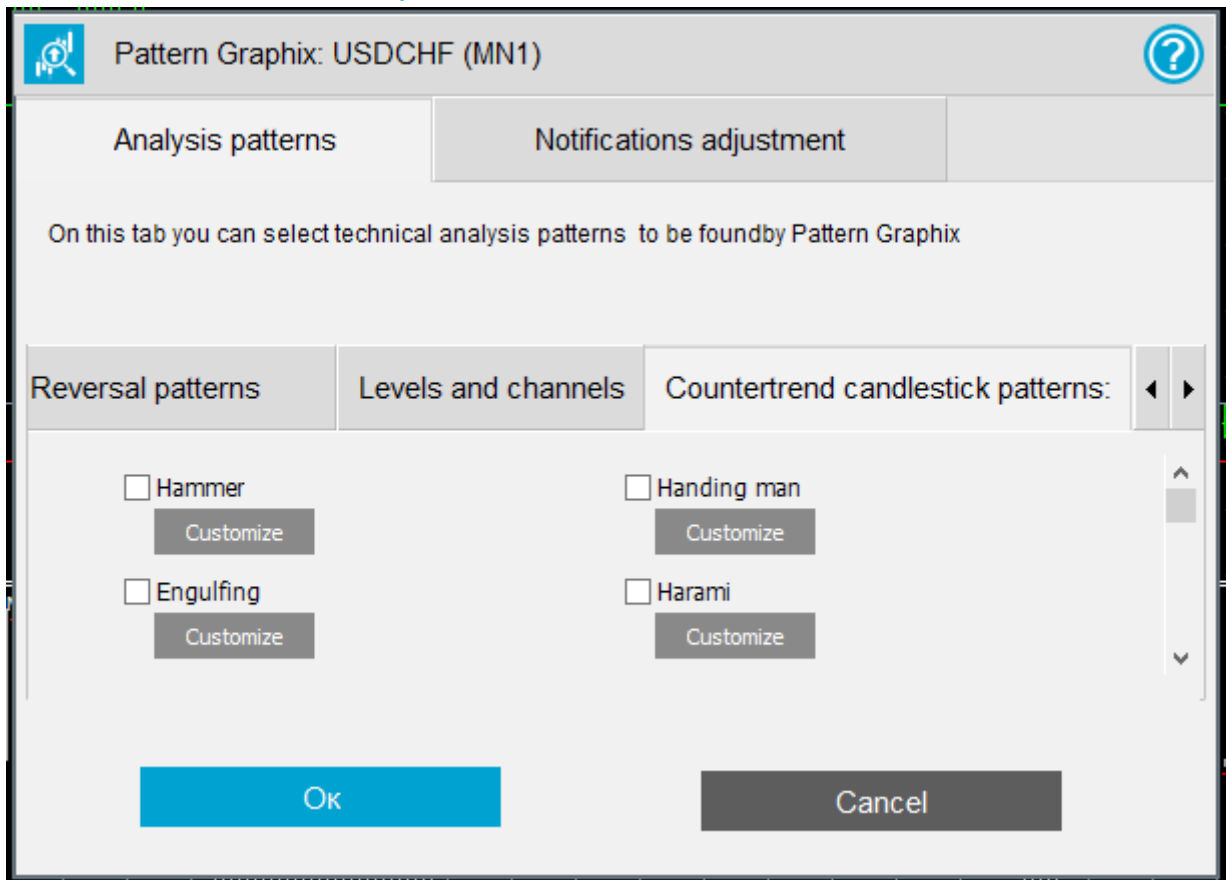
## Levels and channels



Levels and channels subtab of Analysis patterns tab consists of the following elements:

- 1) Support and resistance lines** defines whether the search of Support and resistance lines will be carried out.
- 2) Trend channel** defines whether the search of Trend channel pattern of technical analysis will be carried out.
- 3) Fib levels** defines whether the search of the current Fibonacci levels will be carried out.
- 4) The Customize button** opens the color calibration window.

## Countertrend candlestick patterns



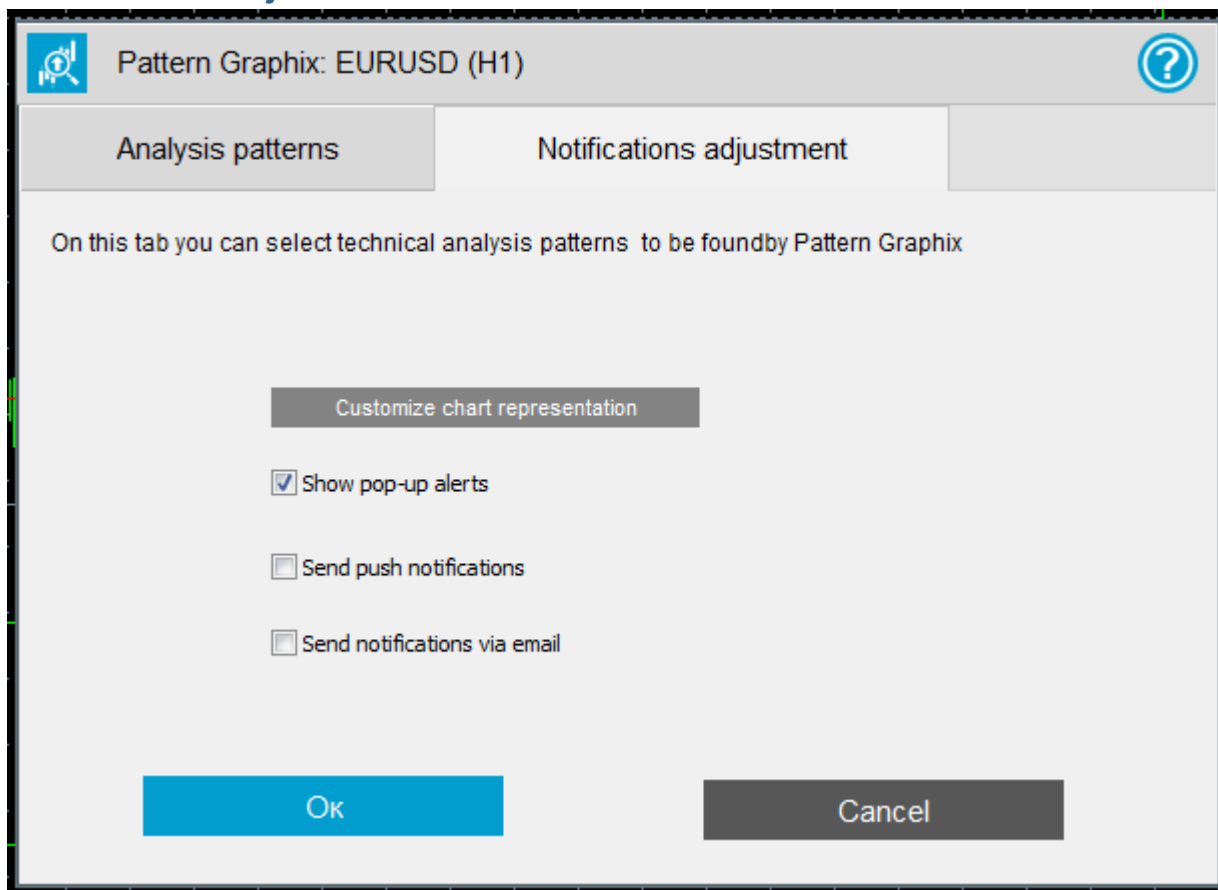
Countertrend candlestick patterns subtab of the Analysis patterns tab consists of the following elements:

- 1) **Hammer** pattern defines whether the search of Hammer pattern of technical analysis will be carried out.
- 2) **Hanging man** pattern defines whether the search of Hanging man pattern of technical analysis will be carried out.
- 3) **Harami** pattern defines whether the search of Harami pattern of technical analysis will be carried out.
- 4) **Engulfing** pattern defines whether the search of Engulfing pattern of technical analysis will be carried out.

Full list of countertrend candlestick patterns you can see at 1.4.

- 5) **The Customize button** opens the color calibration window.

## Notifications adjustment



Notifications adjustment tab consists of the following elements:

**1) Display pop-up alerts** – defines whether the pop-up messages (alerts) will be displayed in MetaTrader 4.

**2) Send PUSH-notifications** – defines whether PUSH-notifications will be sent. For the correct work of this notifications you should:

1. Register at [www.mql5.com](http://www.mql5.com);

2. Indicate your MetaQuotes ID in MetaTrader 4 (Tools → Options → Notifications)

3. Indicate your MetaQuotes ID in MetaTrader 4 mobile version (Options → MetaQuotes ID)

**3) Send notification email** – defines whether email notifications will be sent. For the correct notifications data out you should adjust email in MetaTrader 4 (Tools → Options → Email).

**4) Adjust chart display button** – opens window of color calibrations.